



LET YOUR LIGHT *Shine*
Matthew 5:14-16
Love ★ Joy ★ Goodness ★ Resilience ★ Trust

Welcome to our new termly newsletter 'Endowed Beacon'

Celebrating school life through our children's achievements, events and keeping you informed with important information.

Dear Families and Friends of The Endowed

As another busy and enjoyable term comes to a close, there has been lots to celebrate across the school.

A huge well done to our Year 6 pupils for completing their SATs - we are very proud of their hard work and positive attitude. They are now looking forward to their residential trip and school performance rehearsals.

Pupils across the school have been enjoying Fun Fridays, especially the extra break time and celebrating Sir David Attenborough's 100th birthday with a wild-themed focus on nature. Year's 3 & 4 have particularly enjoyed exploring the natural world during a visit to the local beach.

We were delighted to mark May Day with a special school visit from Dead Horse Morris, a lively Morris dancing side from Whitstable in Kent. The group performed a regional style of traditional English Morris dance - full of energy, colour and centuries-old tradition.

We hope you enjoy reading this edition of our newsletter and sharing in the many successes and experiences from across the school. Thank you, as always, for your continued support, and we wish all our families a lovely and relaxing half-term break.

Ellen Taylor, Headteacher

Shining Moments



- **Whitstable Castle May Day Poster Competition.** Huge congratulations to Harrison for coming 1st Place in the School Castle Finalists category and to Xanthe and Lexi for being runners-up.
- **Congratulations to Evie in Andromeda,** who has received her fourth Blue Peter badge - an amazing achievement. Her growing collection now includes a Green Badge, Sport Badge, Blue Badge and Music Badge. Even more impressively, Evie is already working towards earning her fifth Blue Peter badge. Go Evie!
- **What a season for the Whitstable Town Girls' U10's Red Team.** After an unbeaten season and finishing 25 goals clear at the top, the girls capped it off in style by winning the Shield. A huge well done to Eliza, who captained the side brilliantly and to Lily for earning Player of the Match in the final.
- **Well done to Pip in Orion Class** who walked 5 miles at The Banham Marsden March to raise funds for research and treatment for The Royal Marsden - incredibly, she helped raise over £10,000!

- **We are honoured to share that Jonah, from Cassiopeia** was invited to read a prayer during The Service of Welcome for the Archbishop of Canterbury. A special and memorable moment for him and for all of us watching with pride.



- **In torrential rain, Year 6 bravely** took part in the sponsored 6K Walking for Water to raise funds to help make clean water accessible for everyone, everywhere. Despite the weather, the children showed great determination to raise funds for those women and girls around the world who walk those distances every day to collect the water they need to survive. Well done Year 6 you showed great resilience.



Sporting News



The Endowed netball team were invited to compete in the High 5 Netball Tournament at Queen Elizabeth Grammar School. The team came top of their group, winning all of their matches to secure a place in the semi-finals. They continued to play brilliantly but were unfortunately defeated 2–1 by Hernehill.

Despite the loss, the team were delighted to secure 3rd place medals while competing against some excellent primary schools. They also received amazing compliments on how well they played and represented the school superbly throughout the tournament. Congratulations - what a fantastic achievement!



Week commencing the 18th May

- *On Tuesday, the **Girls' A Team** went to Whitstable Juniors for a friendly and a trial run for the league cup final in a few weeks' time. In blustery conditions, the girls made a slow start and found themselves 3-0 down before half-time. Just before the break, Eliza managed to pull one back and in the second half, a goal from Lexi and two from Fearn led to a 4-3 victory. It promises to be an epic final in Term 6!*
- *On Wednesday, the **Girls' B Team** had a fixture against Whitstable Juniors. Despite the team having varying levels of experience, it was a fast game that went from end*

to end. Eventually, they fell to an agonising 3-2 defeat. However, they should be mightily proud of their efforts. Well done to you all.



Week commencing the 11th May

- ***The boys A team*** wrapped up their league campaign in style with an emphatic 5 - 0 win over St Mary's. The match was end-to-end, with goals from Louis, Alfie, Rory and a superb brace from Beau. Louis B delivered a masterclass in goal to keep the opposition at bay. A fantastic team performance - well done to all on a great season.
 - ***The boys' B team*** played against a strong Whitstable Juniors side on Tuesday. Despite putting in a competitive and determined performance, they succumbed to a 7-1 defeat - Phillip scoring an outstanding goal for the team. Well done to all the boys for their effort and commitment throughout.
 - ***The Year 5 boys*** played Whitstable Juniors. In a fast-paced, action-packed encounter, the boys produced an excellent performance to secure a fantastic 3-1 victory. The team should be incredibly proud of their effort, teamwork and determination throughout the match. There is certainly plenty to be excited about for next year.
-

Netball Match Report by The Netball Squad

Endowed v Joy Lane

On Tuesday 5 May the netball squad had a game against Joy Lane. This match was won 6-7 with goals scored: 1 by Jessie in the first quarter, 2 from Drew and 1 from William G in the second quarter and 3 from Honey in the last quarter. Keeping her word, Marni dumped the entire contents of her bottle over her head!

Endowed v Bysing Wood

On Tuesday 28 April, the netball team had their first home game of the season against Bysing Wood. It was a tough game and the final score was 5-7 to them. The players were fantastic and goals were scored by Reni, Holly, Agnes and Honey. As we failed to seize victory. Marni stayed dry for she didn't have to pour water over her head.

Learning Spotlight

- **Cygnus and Draco's secret mission.** Captivated by this term's book *Marcy and the Riddle of the Sphinx*, the children excitedly entered their classroom through a tunnel and worked together to solve clues in order to open the cartouche, using both their Egyptian knowledge and English skills with enthusiasm and curiosity. Later on in the Term, they acted out scenes from the book, bringing the story to life through drama and teamwork.



- **In Science, Cygnus Class** explored the school grounds in search of natural objects. They then used their discoveries to sketch and describe what they found, developing their scientific observation skills and learning more about biodiversity.
- **Arty Andromeda** embraced their inner artists this term as the class explored linear perspective, learning about the horizon line, vanishing point and orthogonals to create depth. They showed creativity and strong observational skills in their artwork.
- **Cygnus, Draco, Orion and Pegasus class** inspired by Sir David Attenborough's 100th Birthday and lifelong champion of the natural world, our Y3 and Y4 children marked this special occasion with a visit to our local beach. They explored with excitement, asking thoughtful questions, noticing tiny details in the sand, sea and shoreline, and turning what they saw into creative artwork. A fitting celebration of nature and learning.

[To view more pictures of Year 3&4 exploring their local beach, please click this link to our Website](#)



- **Creative Maths! Cassiopeia and Andromeda** creatively used tape and their desks to make different shapes. They measured and found the sum of the angles to investigate the relationship between the number of sides and the sum of the interior angles. The children really enjoyed this hands-on activity exploring mathematical ideas in a practical and engaging way.



- **Aquila and Phoenix class can give themselves a big pat on the back.** A huge well done to our amazing Year 6 pupils for completing their SATs. We are so proud of their resilience and determination. Year 6's were especially excited, as at the end of their SATs, they received their leavers hoodies - a special reminder of all the memories and friendships made during their time with us.



- **Cassiopeia Class** turned science into a delicious hands-on experiment using Oreo cookies to explore the 8 primary moon phases! By twisting, scraping and designing their cookies, the children creatively modelled how the Moon's appearance changes as different amounts of its surface are illuminated by the Sun and viewed from Earth. Each Oreo became a tasty representation of lunar science in action.



- **Pegasus Class** investigated how different switches work in electrical circuits. Children explored how switches can open and close a circuit to control the flow of electricity. They showed fantastic problem-solving, teamwork and scientific thinking throughout the practical lesson.

[Click to view all our Class Pages on the Website](#)



'Walk on the Wild Side' Photography Competition



Miss Chapman is excited to invite children to take part in our Wildlife Photography Competition '***Walk on the Wild Side***', launched to celebrate Sir David Attenborough's 100th birthday.

This is a fantastic opportunity for pupils during half-term to:

- Build confidence and creativity through hands-on photography
- Explore local wildlife and green spaces, however big or small
- Connect with nature and develop their observation skills

How it works: Pupils can photograph any aspect of wildlife - from insects in the playground, to birds in the park or pets at home. We have already had one entry of a crab at the beach!

Entries can be taken on phones, tablets, or cameras - using safe online procedures as necessary.

Submission deadline: Tuesday 2nd June

How to enter: please bring in a printed picture to Miss Chapman with your name and class on, or email to homecontact@whitstable-endowed.kent.sch.uk with the same information

We would love for as many of the children to get involved as possible and to encourage them to discover the magic of the natural world through a lens.

Dates for your Diary

Whitstable & Seasalter Endowed Church of England (Aided) Junior School

Term 6 dates for your diary



Events so far!

Term date Monday 1 June - Friday 17 July 2026

Fun Fridays

Please keep an eye out for your messages and our website calendar when themes will be released at the beginning of the week

HALF TERM Monday 25 - 29 May

Term 6 Only: every Friday - Phoenix Swimming

Tue 2 June

- Class Photographs

Mon 8 - Wed 10 June

- Y6 Residential

Tue 23 June

- Sports Day: Whitstable Cricket Ground

Thu 2 July

- Transition Day

Thu 25 June

- School Disco

Tue 7 July

- Y6 Performance, 1.30pm

Wed 8 July

- Y6 Performance, 5.00pm

Fri 10 July

- Y6 Friday Fun Swim

Fri 10 July

- Summer Fun Day, 3pm (bouncy castle, tombola, stalls etc)

Fri 17 July

- Leavers Ceremony (to be held in St Alphege Church)

Attendance Matters

Punctuality Reminder

We have recently seen a significant increase in children arriving late to school. This is a concern, as the start of the school day is a vital time for learning and sets expectations for the day ahead. Children should be in school and learning by 8.50am. School gates open at 8.40am and close promptly at 8.50am. Any child arriving after this time will be marked as late. If you arrive after the gates have closed, you must report to the school office.

Holidays

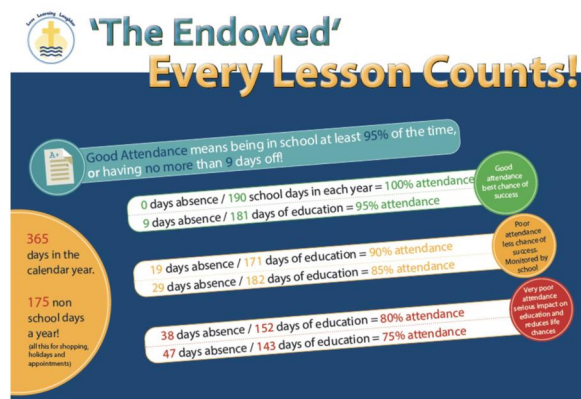
Please remember that term-time holidays will not be authorised and, in many cases, will result in a Fixed Penalty Notice (fine) being issued.

Attendance

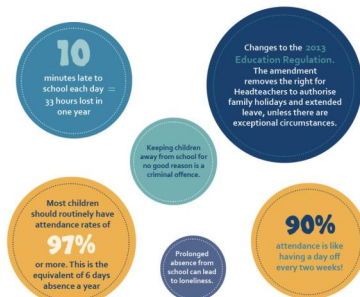
Attendance plays a vital role in every child's education. Being in school every day helps children:

- Build a strong academic foundation
- Develop important social skills
- Maintain routines that support their overall well-being
- Lessons build up day by day, and missing school - even occasionally - can mean falling behind in learning, friendships and confidence.

Thank you for your continued support in ensuring your child attends school regularly and punctually. Together, we can help all of our pupils thrive.



Did you know?



Q & A's

What would be an acceptable reason for not attending school?
Contagious diseases for instance:
— Chickenpox — Sickness
— Measles — Diarrhoea

What would be an unacceptable reason for not attending school?
— The alarm didn't go off — Not finished homework
— Minor illness — I had a late night
— Car wouldn't start — Incorrect school uniform
— Shopping — Day out
— Birthday

What about appointments?
— Dental appointments
— Doctor's appointments
— Optician appointments

If possible not during school time

Stay Connected, Stay Informed

We are excited to celebrate the launch of our 'refreshed' school website! The new site has been designed to make it easier for parents and families to stay informed, connected and

involved in school life. Alongside our website, our Facebook page will continue to share news, achievements, events and snapshots of learning across the school. We also send important messages, letters and notifications through My Child At School to help keep families up-to-date with key information.

We encourage all parents to regularly check the website, follow our Facebook page, and keep an eye on My Child At School to stay connected with everything happening in school.



[Click on this link to view our school website](#)

[Click on this link to view our Facebook page](#)

Feedback Survey

Survey Feedback



Thank you to all the parents and carers who recently shared their feedback about our school. Your insights and encouragement are valued and I am delighted to present a snapshot of the highly positive results.

95%

strongly agree or agree that the school helps their child to develop skills and knowledge across different subjects

91%

strongly agree or agree that their child feels safe at school

87%

said their child are very happy or happy at our school

84%

said the school supports their child's individual needs very well or well

71%

said they feel the school communicates with them very well or well

69%

said they strongly agree or agree that the school deals with any concerns or problems I raise effectively

Summary Snapshot

Our school provides a warm, nurturing and inclusive environment where children feel safe, valued and supported. Strong relationships between staff, children and families ensure every child is known as an individual, and pastoral care is a clear strength, underpinned by values of kindness, respect and our Christian ethos.

Our staff have a strong understanding of children's needs, including those with SEND, and we work closely with families to provide timely and tailored support. School communication is open and responsive, helping to build trust and ensure children feel listened to and emotionally secure.

Endowed teaching is engaging and well planned, with high expectations and effective adaptation to meet individual needs. Pupils enjoy learning, make good progress and develop positive attitudes, with particular strengths in subjects such as science and reading.

Our broad curriculum and wide range of enrichment opportunities, including trips, themed days, author visits and creative projects enhance children's experiences and personal development. Sport and enrichment contributes to children's confidence and enjoyment of school.

Wraparound care and after-school provision are of a high quality and well organised. Initiatives such as Fun Friday contribute to pupils' well-being and sense of belonging.

We understand that experiences can differ, and as in all areas of life, there is always opportunity to improve. Your feedback, concerns and ideas are appreciated. Based on your feedback, we are exploring ways to provide greater opportunities for creativity, enrichment programmes and increased competitive sports participation, helping every child to discover and develop their individual strengths and interests. We remain committed to listening, learning and working with you to ensure our school continues to be a happy, supportive and inspiring place for every child to thrive.

Notice Board

DREAM LOUDER FESTIVAL 2026

Live @ The Monument, Whitstable 5th - 7th June

FRIDAY
from 7pm

Young Original Artists Showcase

SATURDAY
from 4pm

Triple Charm
Jeff Buckley Tribute
The Fireflies - Faded Notes
Whitstable Endowed School Choir + special guests

SUNDAY
from 3pm

Sunset 7
Mercury One • Evelyn Cornell
The Undecided • High Tide Havoc
Whitstable Endowed School Choir

www.dreamlouder.co.uk

Lycali Access to Support Fund

How Psychoeducation helps?

- ✓ Understanding the diagnosis
- ✓ Practical strategies for everyday life
- ✓ Support for home, school or work

Applications close at the end of each month. Successful applicant contacted by the 7th. Sessions may begin the following month.

APPLY NOW

Contact us:
www.lycali.co.uk
info@lycali.co.uk
Based in

Lycali
Therapies & Assessment

The Access to Support Fund is not a crisis service.

FOOTBALL FUTURES MAY SOCCER SCHOOL

AGES U5 - U13 BOYS & GIRLS WELCOME

THURSDAY 20TH & FRIDAY 29TH MAY

**SINGLE DAY - £23.00
BOTH DAYS - £40.00**

10:00AM - 15:00PM
EARLY BIRD FROM 09:00 - £4

UNIVERSITY OF KENT • SPORTS PAVILION • CT2 7SR

CONTACT@FOOTBALL-FUTURES.COM
WWW.FOOTBALL-FUTURES.COM

Wild about Whitstable

SEE IT! CELEBRATE IT! SAVE IT!

ECO FAIR 11:00 TO 16:00 | SAT 30 MAY 2026
St John's Methodist Church, Argyle Road, Whitstable, CT5 1JS

- 11:00 - 11:45** Workshop: Nature poetry
- All day** Exhibitors: Learn about local conservation
- 11:25 - 11:40** Talk: Permaculture
- All day** Retailers: Eco products and sustainable solutions
- 11:45 - 13:15** Activity: Nature treasure hunt with biologist & environmental expert
- All day** Bring & buy: To reuse, recycle and mend
- 13:15 - 13:30** Talk: Future food forests
- All day** Activity: Bird nest building & bird expert on hand
- 14:00 - 14:45** Workshop: Drawing nature
- All day** Activity: Bee bomb making & bee expert on hand
- 14:00 - 16:00** Activity: Children's nature story telling
- All day** Activity: Great prizes to be won!
- 14:45 - 15:00** Talk: Keeping our sea healthy & plastic free!
- All day** Activity: Collaborative nature appreciation through art and poetry

Enter our FREE family Quiz Trails competition

A great activity for the holidays! We're a Mum and two daughters team creating educational, history based fun Kent Quiz Trails! They live up a healthy family walk!

Enter at Prize Draws on our home page - good luck!

Let the adventure begin with Quiz Trails

We're a Mum and two daughters team creating educational, history based fun Kent Quiz Trails!

LOW - COST!
Clues for adults PLUS clues for juniors which are made for 5 to 11 year olds!

WHAT'S ON? IN KENT

Download the app to discover hundreds of activities and events going on in Kent!

Special offers too!

Quote Discount Code DISCOUNT10 at our checkout

Trustpilot

Quiz Trail Reviews - Excellent

A fun low-cost, healthy activity that entertains all!

Quiz Trails are written for adults and packed with local history. As well as adult leisure reading, Quiz Trails are a fabulous activity for adults and children to do together - with a set of fun clues for each.

You can take as long as you like to complete the trail, making it the perfect activity for a relaxed trip out.

At just £6.99 a copy for a group to share, Quiz Trails are the perfect way to spend time outdoors in the fresh air with loved ones - great to do with grandparents too! ALL trails are accessible.

www.QuizTrail.co.uk
Quote Discount Code DISCOUNT10 10% OFF at our checkout

Canterbury Family Hubs Timetable

1st June to 22nd July 2026
Closed on Bank Holidays

All of our groups and services are free to attend. Please Note: Signing in will not be available until 20 minutes before the session starts.

Day	Activity	Time
Monday	Whitstable Baby Group	10:00am - 11:30am
	Whitstable Baby Massage	1:00pm - 2:00pm
Tuesday	Whitstable Parenting Support and Drop In	9:30am - 11:30am
	Whitstable Talking Walk-in	9:30am - 11:30am
Wednesday	Whitstable Introducing Solid Foods	12:30pm - 2:00pm
	Whitstable Time To Shine	1:30pm - 2:30pm
Thursday	Whitstable Stay and Play	10:00am - 11:30am
	Whitstable Making It Real	1:30pm - 2:30pm
Friday	Whitstable Child Health Clinic	9:30am - 11:30am
	Whitstable NCT Infant Feeding Support Groups	9:30am - 11:30am

Information

www.kent.gov.uk/familyhub

Activity	Description
Stay and Play	A relaxed session for families with play, singing, stories and messy fun for children aged 0-5.
Baby Group	A welcoming space to bond with your baby and meet other parents. Includes songs and sensory play. For babies who are pre-walking.
Talking Walk-in	Play-based drop-in sessions for anyone concerned about their pre-school child's speech, language or communication skills. Led by the Speech and Language Team. These drop-ins can get very busy, and it is possible you might not be seen. Please call our Family Hub to let us know how the drop-in.
Parenting Support and Advice Drop In	Whitstable Second Tuesday of the month Drop in for friendly advice on any parenting questions (0-13) - no booking needed.
Speak Out Youth	1 Session Youth-led projects where young people design and deliver community initiatives and build leadership skills. Booking Required: 27 th June - 1 st July
Making It Real	4 Week Course Practical tips and activities to help parents support early reading and writing at home. For children aged 2-4. Booking Required: Starts 25 th June
Introducing Solid Foods	1 Session Find out more on choosing first foods and making mealtimes fun and safe for your little one. Booking Required: 29 th July
Food Bank Drop In	Come along and meet a member of the Food Bank Team to find out how they can support you. For families with children and young people aged 5-19 years (23 with SEND).
Time To Shine	Small, supportive groups for children in school years 1 to 6 and 1 to 11 with SEND to build confidence and social skills through fun activities. Booking Required: Starts 18 th June
Baby Massage	5 Week Course A 5-week course to learn soothing massage techniques to help your baby relax, sleep better and ease colic. Great for bonding. For babies 0-6 months. Booking Required: Starts 15 th June
Child Health Clinic	A drop in clinic for you to come along, have your baby weighed and speak to a member of the Health Visiting Team. Please arrive no later than 15 minutes before the end of the clinic.
NCT Infant Feeding Support Groups	Friendly, free infant feeding support from pregnancy through early parenthood. Trained peer supporters help you feel supported and connected - a great way to meet other parents!
Jobcentre Plus Support Session	12 th June and 10 th July Are you worried about the financial cost of a bill? Do you have a problem with a bill? Do you have a problem with a bill? Do you have a problem with a bill? We can support if you are looking for skills training, employment or help with bills. To book, please contact Family Hubs.

Please Note: For Health and Safety reasons, there are room capacity limits in place.

Useful Contact Numbers:
Health Visitor: 0300 7900 156
Midwife: 01227 296737

For more information about opening times give your local centre a call.

Healthy Start Vitamins: Are you eligible for Healthy Start Vitamins? Get up to 10 hours of free vitamins for your children and yourself. For more information visit our website.

Early Learning for 2 year olds: Some 2 year olds can get up to 10 hours of free childcare per week. For more information visit our website.

Family Hub Sites are run by Kent County Council
www.kent.gov.uk/familyhub

HALF TERM AT THE RESERVE MAY 2026



TUESDAY 26TH 11AM BEADY TREES AND THE LITTLE SEED

Tree bead craft* and 'The Little Seed', by Magdalene Tsirkas, an interactive story telling. The little seed is blown underground and rained on. A shoot appears and the sun shines. Something is growing – what will it be? This session is for preschoolers 3+, and the young at heart, in celebration of The National Year of Reading. * *Warning - activity contains small parts.*

12.00PM STORY TIME - THE NATIONAL YEAR OF READING

Free story time in the picnic area at midday. No need to book.

1PM SLUGS AND SNAILS

What's the difference between a slug and a snail? *Shell* we find out? Discover the benefits of these slimy gastropods. Learn how to label the parts of a snail and make your own paper snail with a curly shell. How many types of slugs and snails can you identify on the reserve?

THURSDAY 28TH 11AM BEE BUDDIES

Join us for a hands-on candle rolling session to learn the craft of beeswax candle rolling. Discover the properties of natural beeswax. Take home your beautiful creation. Create a honeycomb hive poster and then 'bee spot'.

1PM BEADY TREES AND THE LITTLE SEED (SEE ABOVE)

FRIDAY 29TH 11AM SLUGS AND SNAILS (SEE ABOVE)

1PM BIG BUG HUNT Bug pot in hand and ID chart at the ready. It's time to search for some of the reserve's smallest residents. All that wiggles, creeps, scuttles, crawls and flutters can be closely observed and identified.



HOW TO BOOK

www.monkton-reserve.org/events/

Visit our museum, café, gift, and book shops.

MORE INFO:

education@monkton-reserve.org

PRICE PER CHILD

Members: £3

Non-Members: £5

(includes entrance to the reserve per child and for accompanying adults)



WHERE

Monkton Nature Reserve
Canterbury Road
Ramsgate CT12 4LH

WWW.MONKTON-RESERVE.ORG

THANET COUNTRYSIDE TRUST
(CHARITY NO: 1211099)

Any other business

- **MCAS** - Please ensure any **outstanding payments** on your My Child at School app (MCAS) are paid up by the end of today. Thank you for your support.
- **Dinners** - There is a new dinner menu for Terms 5 & 6. Please book via MCAS.
- **Parking** - Just a polite reminder that the gate at the top of the driveway is closed between 8.30am - 9.00am and again between 3.10pm - 3.30pm on school days to protect pedestrians in and out of the school. Parents collecting from clubs and LHKC should also not be using the drive. Thank you for your understanding and continued support in helping us keep everyone safe.

- **Head Lice** - As we head into half term, please could we ask you to keep an eye out for head lice and check your child's hair regularly. Early treatment really helps stop them spreading around the class. If you do spot anything, please click on the below link for helpful advice and treatment guidance. Thank you so much for your support!

Head Lice Key Facts

- **Summer Fun Day** - We are starting to collect donations for our Summer Fun Day and would be very grateful for your support. We are happy to accept good quality items, such as: Board Games, Stationery, Jigsaws and Children Books. We would also greatly appreciate donations from local shops or businesses. If you or a family member works for a business that may be willing to donate an item, please do let us know.

- **A warm welcome to Mrs Pattenden** who will be joining our office team in Term 6.



The Endowed School Dinner Menu

From *April 2026*

	Mouth-watering Monday (Meat Free)	Tantalising Tuesday	Wonderful Wednesday	Tasty Thursday	Feel Good Friday
Week 1	Tomato & Basil Pasta Bake (2,7) Served with Garlic Bread (2,7) Grated Cheese (7) Salad Bar Fresh Fruit Salad, Meringue & Squirry Cream (7)	Beef Burger (2,13) ✓ Veggie Burger (2,13) Served with Breaded Bun (2,7) Homemade Coleslaw (4,9) Salad Bar Carrot & Orange Cake (2,4)	Roast Gammon ✓ Quorn Roast (4,7) Served with Roast or Boiled Potatoes Seasonal Vegetables Gravy Salad Bar Sugar Free Jelly & Ice Cream (7)	Wraps (2) Served with Tuna Mayo (4,5,9) Egg Mayo (4,9) Ham / Quorn Ham Grated Cheese (7) Homemade Coleslaw (4,9) Salad Bar Banoffee Pie (2,7)	Fish Fingers (2,5) ✓ Cheese Tartlet (2,4,7) Served with Oven Chips Baked Beans Salad Bar Oat Chocolate Biscuit (2)
Week 2	Vegetarian Chili Con Carnie (2,4) Served with Steamed Rice Grated Cheese (7) Tortilla Chips Salad Bar Peaches & Ice Cream (7)	Butchers Sausages (2,9,14) ✓ Quorn Sausages (2,4) Served with Hot Dog Rolls (2) Potato Salad (4,9) Onions Salad Bar Jam Tart (2,7)	Homemade Meatballs & Pasta (2) ✓ Vegetarian Pastry (1,2,7) Served with Homemade Tomato Sauce Grated Cheese (7) Seasonal Vegetables Salad Bar Mousse Cup (7)	Tortilla Wrap (2) Served with Chicken Fajita Egg Mayo (4,9) Tuna Mayo (4,5,9) Grated Cheese (7) Salad Bar Sticky Toffee Pudding with Custard (2,4,7)	Fishcake (2,4) ✓ Veggie Whirl (2,4,7) Served with Oven Chips Baked Beans Peas Salad Bar Chocolate Orange Fairy Cake (2)
Week 3	Margherita Pizza (2,7) Served with Herby Potato Wedges Homemade Coleslaw (4,9) Salad Bar Lemon Drizzle Cake (2,4)	Cheese & Bacon Pasta Bake (2,7) ✓ Creamy Tomato Pasta Bake (2,7) Served with Crusty Bread (2) Peas Salad Bar Ice Lolly (2,4)	Roast Chicken ✓ Vegetarian Fingers (2) Served with Seasonal Vegetables New Potatoes Gravy Salad Bar Strawberry Cheesecake (2,7,13)	Jacket Potato Served with Baked Beans Egg Mayo (4,9) Tuna Mayo (4,5,9) Grated Cheese (7) Salad Bar Apricot Flapjack (2)	Salmon & Cheese Puff (2,5,7) ✓ Cheese & Marmite Whirl (2) Served with Oven Chips Sweetcorn Salad Bar Strawberry Smoothie

Available Every Day: Jacket Potato with a choice of beans/cheese (preordered option). Other Pudding Choices include Frube Yoghurt and Fresh Fruit.

Keep in touch...

If you need to get in touch with us, please do not hesitate to contact the school office by phone or email. Parents can also write notes in their child's pink contact book, which is checked regularly by their teacher. We are always happy to help and support our families wherever we can.

T: 01227 273630

E: homecontact@whitstable-endowed.kent.sch.uk

W: www.whitstable-endowed.kent.sch.uk/