

The Endowed

Newsletter

6 February 2026 Vol 12, Issue 20



HELLO



Dear Families and Friends of The Endowed,

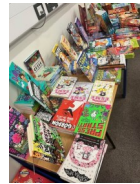
This term has gone by very quickly and we only have one week left of this term before we break up for half term.

Our theme in worship has been 'Going the extra mile' and I can confirm that we see this every day at school; our children help, are kind and challenge themselves. It is a joy to see!

Have a lovely weekend.
Kind regards,

Ellen Taylor
Headteacher

Headteacher@whitstable-endowed.kent.sch.uk



On Tuesday and Wednesday this week, we welcomed Tales on Moon Lane for National Storytelling Week. Tamara read a variety of stories to each class in our lovely library. Children talked about stories they enjoy reading and were guided to others that they might not yet know! We then hosted a book sale after school where children were given a snapshot of fabulous books from the shop. Thank you so much to Tales on Moon Lane for such a wonderful few days.

Mrs Blinston Jones, English Lead



On FRIDAY 13 FEBRUARY our Fun Friday will be WEAR SOMETHING RED. Please wear school uniform but add a red accessory, eg red socks or hairband. This is to show support for the British Heart Foundation as February is Heart Month. If you would like to donate to them you can follow [this link](#).

We will also be collecting clothing donations for the British Heart Foundation charity shop in Canterbury. If you have anything to donate, please bring in a bag of clothing on Thursday 26 or Friday 27 February at drop off—please do not bring in before this date. Thank you for your support.

KENT COLLEGE EXPERIENCE DAY



At Kent College we had a great time in the farm grooming the ponies and cuddling the guinea pigs. We also really enjoyed the food. All the teachers there were nice. We especially enjoyed music, PE and Business. We all enjoyed and had great fun doing the activities. Thank you Kent College.

Eliza, Cassiopeia Class

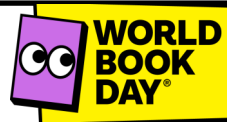
FUN FRIDAYS



WEAR SOMETHING ON YOUR HEAD DAY

Today for Fun Friday children could come to school wearing something on their head. It was fun to see lots of hats, wigs, hairbands and all the weird and wonderful things you wore on your heads!

Next Friday dig out your red socks and accessories as Fun Friday will be supporting the British Heart Foundation Heart Month.



THURSDAY 5 MARCH

We will be sending out a letter closer to the time, but wanted to give you a heads up for World Book Day which is happening on Thursday 5 March.

The theme this year is 'Step into a story' and there will be lots of fun activities for the children who are invited to dress up as their favourite book or character for the day.

Mrs Blinston Jones is also inviting you to STEP INTO A STORY with special story jars. You can start thinking about these now but hand them in on WBD.

World Book Day – Thursday 5th March Step into a story!

- Use a jar from home
- Create your own story inside the jar
- You can use a well known story for inspiration
- Or you can create one of your own
- Give to GBJ by Thursday 5th March



HEADTEACHER CHALLENGE



Look at this gorgeous page of doodles that Elsie did at home after our special DOODLE DAY last week. How lovely that you carried on doodling.

Your Headteacher Challenge this week is to take a look at the [Action for Happiness Calendar](#) - even if you don't take part every day, see if there are any days you could do a Friendly February action.



HAPPY BIRTHDAY

Happy Birthday to the following children who have their birthday this week.

EMILIA in Draco Class
JOSHUA & RAFE in Orion Class
ZACHARY in Aquila Class

We hope you all have a lovely day!

QUOTE OF THE WEEK

The best way to cheer yourself up is to cheer someone else up'
 Mark Twain

PRAYER OF THE WEEK

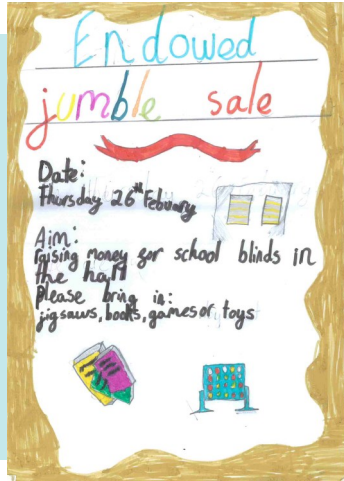
Dear God,
 Help us to be wiser day by day,
 We ask for courage and strength.
 Help us to know when to speak and when to remain silent,
 Help us to know when to take action and when to be still,
 Be with us in the decisions we take in our lives.
 Amen

CAKE SALE

Thursday 12 February

The Fundraising Team will be holding a CAKE SALE after school on Thursday 12 February. Can Year 4 please provide the cakes and bring them in on the morning of the 12th. Thank you for your support.

Miss Chapman and some of the children have arranged an Endowed Jumble Sale on Thursday 26 February to raise money for new blinds for the hall. Please bring in any good quality jigsaws, books, games or toys.



DATES FOR THE DIARY

Don't forget all families are invited to come to St Alphege Church every Wednesday at 9.00am for our Collective Worship.

Tuesday 10 February	Andromeda Kent College Experience Day
Thursday 12 February	Fundraising Team Cake Sale after school
Friday 13 February	End of Term 3 Fun Friday - Supporting British Heart Foundation and Heart Month - wear uniform but accessories to show your support. Deadline for payment/permission Y5 trip to Tyland Park
HALF TERM	
Monday 23 February	Term 4 begins
26 February	Jumble Sale - please bring in jigsaws, books, games or toys.
27 February	British Heart Foundation clothing donations due in
Thursday 5 March	World Book Day (bring in Story Jars) Dress up as your favourite character or book for the day - letter to follow closer to the time

SCHOOL FLO - Miss Parker

Please see the Canterbury Family Hub upcoming events in Whitstable from February - April.

Canterbury Family Hubs
Timetable
 23rd February to 2nd April 2026
 Closed on Bank Holidays

All of our groups and services are free to attend.
 Please Note: Signing in will not be available until 10 minutes before the session starts.

Monday	Whitstable Baby Group 10:00am - 11:30am	Whitstable Family Support and Social Inclusion 9:30am - 11:30am	Whitstable Talking Walk in the Woods 9:30am - 11:30am	Whitstable Supporting Your Teen 1:30pm - 3:00pm	Whitstable Speak Out Youth 6:00pm - 8:00pm
Tuesday	Whitstable Introducing Solid Food Workshop 12:30pm - 2:00pm	Whitstable Baby Massage 1:00pm - 2:00pm	Whitstable Speak Out Parents 2:00pm - 3:00pm	Whitstable Compass 6:00pm - 7:00pm	
Wednesday	Whitstable Stay and Play 10:00am - 11:30am	Whitstable Little Talkers 1:00pm - 2:00pm	Whitstable Time To Shine Evening Sessions		
Thursday	Whitstable Child Health Clinic 9:30am - 11:30am	NCT Infant Feeding Support Clinic 9:30am - 11:30am	Whitstable Food Bank Drop In 10:00am - 11:00am		
Friday					

Family Hub Sites are run by Kent County Council

flo@whitstable-endowed.kent.sch.uk